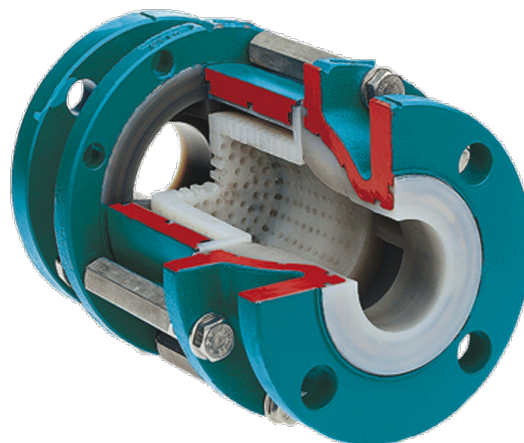


BASKET

Strainers with PFA/FEP Lining

DIN-EN: DN 15 - 250 / PN 10 - 40

ASME: NPS 1" - 4" / class 150



Design Features

Design Characteristics

- temperatur range up to 150°C
- exchangeable filter basket
- low pressure drops
- flow area corresponds to size of nominal bore
- filter basket made of PFA/FEP (seperately available)
- 3 mm mesh width, other mesh width on request
- tubular sihtglass on request

Materials

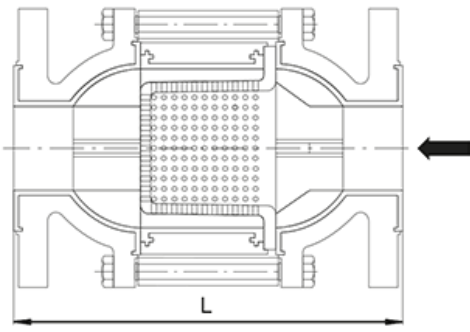
Standard

- Ductile cast iron ENJS 1049, ASTM Gr 60-40-18 / A395 **Special materials**
- Carbon Steel 1.0619 / ASTM A216 WCB
- Stainless steel 1.4308 / ASTM A351 CF8M

- Unalloyed stainless steel casting (low Temp.) 1.1138 / LCC/LCB / A352 **Sightglass**
- Borosilikat **Lining materials**
- Body: PFA, PFA-conductive, FEP

Dimensions

DIN 3202/EN 558-1	DN	PN	L
	15	10-40	130
	20	10-40	150
	25	10-40	160
	32	10-40	180
	40	10-40	200
	50	10-40	230
	65	10-40	290
	80	10-40	310
	100	10/16	350
		25/40	
	150	10/16	350
	25/40		
200	10/16/25	400	
250	10/16/25	450	
ASME B 16.5	NPS	PN	L
	1"	150	160
	1½"	150	*
	2"	150	230
	3"	150	310
	4"	150	350



Higher pressure load on request